



Apt 514 Crusader, Chapeltown Street, Manchester, M1 2EW

Live in a 200-year-old mill
Exposed brick, timber beams and huge window
2 bed, 2 bath
Engineered oak floors
961 sq ft
Fifth floor
Lush residents' garden with BBQs & firepits
Owner occupier community – no investors allowed!

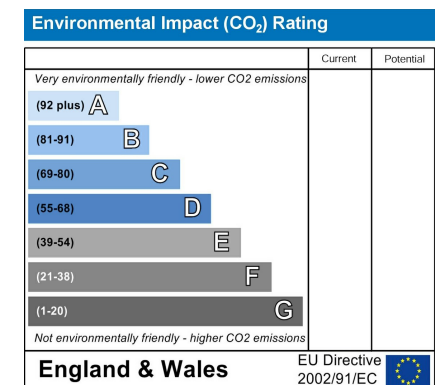
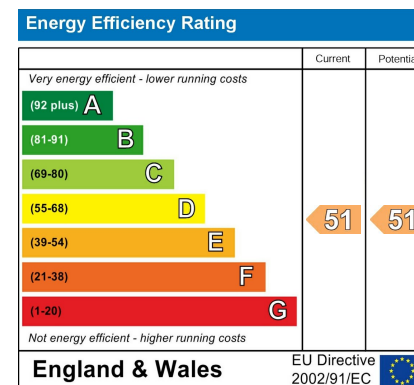
Price £430,000

Viewing arrangements

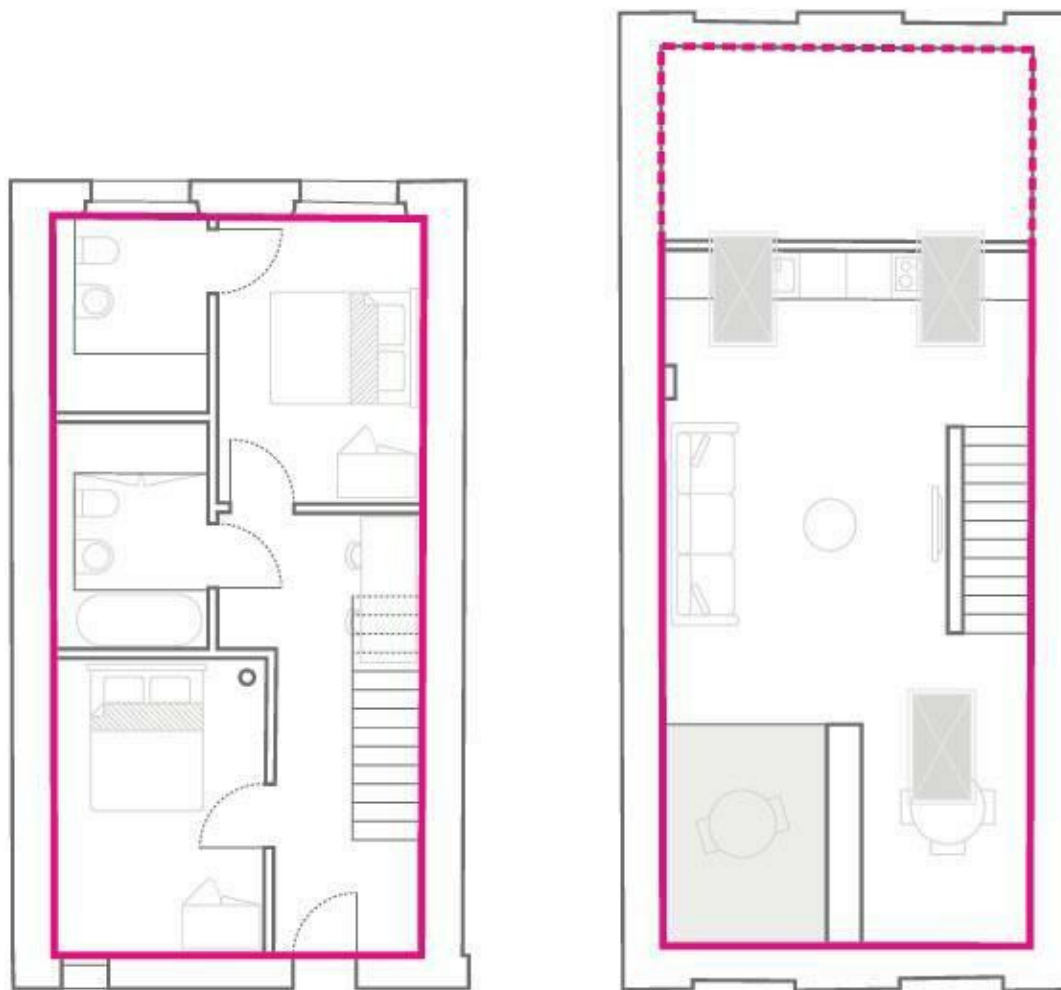
Viewing strictly by appointment through the agent
245 Deansgate, Manchester, M3 4EN 0161 833 9499 opt 3

Additional Information

£3.30 per sq ft per annum
Ground rent - PEPPERCORN
Lease is 250 years from 2015
Council Tax Band - tbc







These particulars are believed to be accurate but they are not guaranteed and do not form a contract. Neither Jordan Fishwick nor the vendor or lessor accept any responsibility in respect of these particulars, which are not intended to be statements or representations of fact and any intending purchaser or lessee must satisfy himself by inspection or otherwise as to the correctness of each of the statements contained in these particulars. Any floorplans on this brochure are for illustrative purposes only and are not necessarily to scale.

Offices at: Chorlton, Didsbury, Disley, Hale, Glossop, Macclesfield, Manchester Deansgate, Manchester Whitworth Street, New Mills, Sale, Wilmslow and Withington

245 Deansgate, Manchester, M3 4EN

0161 833 9499 opt 3

manchester@jordanfishwick.co.uk
www.jordanfishwick.co.uk

